



SOUTH EASTERN LIVESTOCK EXCHANGE

**POLLUTION INCIDENT  
RESPONSE MANAGEMENT PLAN  
(PIRMP)**

ISSUE DATE: 15 DECEMBER 2024



## Table of Contents

1. PURPOSE.....	3
2. SCOPE.....	3
3. DEFINITIONS.....	3
4. DETAILS.....	4
5. POLLUTION INCIDENT – PERSON(S) RESPONSIBLE .....	4
6. NOTIFICATION OF RELEVANT AUTHORITIES .....	5
7. NOTIFICATION OF NEIGHBOURS AND THE LOCAL COMMUNITY .....	6
8. DESCRIPTION OF LIKELIHOOD OF HAZARDS.....	7
9. PRE-EMPTIVE ACTIONS TO BE TAKEN.....	7
10. INVENTORY OF POLLUTANTS.....	8
11. SAFETY EQUIPMENT.....	10
12. COMMUNICATING WITH NEIGHBOURS AND THE LOCAL COMMUNITY .....	10
13. MINIMISING HARM TO PERSONS ON THE PREMISES .....	10
15. ACTIONS TO BE TAKEN DURING OR IMMEDIATELY AFTER A POLLUTION INCIDENT ...	12
16. COORDINATING WITH PERSONS AND AUTHORITIES .....	13
17. STAFF TRAINING.....	13
18. TESTING AND UPDATING OF THE PIRMP .....	14



## 1. PURPOSE

RLX Operating Company Pty Limited (RLX) holds an Environment Protection Licence with the NSW Environment Protection Authority (EPA) for South Eastern Livestock Exchange (SELX). As per the *Protection of the Environment Operations Act 1997* (the POEO Act), the holder of an Environment Protection Licence must prepare, keep, test and implement a pollution incident response management plan (PIRMP) that complies with Part 5.7A of the POEO Act in relation to the activity to which the licence relates.

If a pollution incident occurs in the course of an activity so that material harm to the environment (within the meaning of section 147 of the POEO Act) is caused or threatened, the person carrying out the activity must immediately implement this plan in relation to the activity required by Part 5.7A of the POEO Act.

A copy of this plan must be kept at the licensed premises, or where the activity takes place in the case of mobile plant licences, and be made available on request by an authorised EPA officer and to any person who is responsible for implementing this plan.

Parts of the plan must also be available either on a publicly accessible website, or if there is no such website, by providing a copy of the plan to any person who makes a written request. The sections of the plan that are required to be publicly available are set out in section 74 of the Protection of the Environment Operations (General) Regulation 2022.

## 2. SCOPE

This PIRMP covers the SELX site at 9 Bellevale Road, Yass which operates under Environmental Protection Licence No. 20691.

## 3. DEFINITIONS

**Pollution incident** means an incident or set of circumstances during or as a consequence of which there is or is likely to be a leak, spill or other escape of deposit of a substance, as a result of which pollution has occurred, is occurring or is likely to occur. It includes an incident or set of circumstances in which a substance has been placed or disposed of on premises, but it does not include an incident or set of circumstances involving only the emission of any noise.

A pollution incident is required to be notified if there is a risk of 'material harm to the environment', which is defined in section 147 of the POEO Act as:

- a) Harm to the environment is material if:
  - i. It involves actual or potential harm to the health or safety of human beings or to ecosystems that is not trivial, or
  - ii. It results in actual or potential loss or property damage of an amount in aggregate, exceeding \$10,000 (or such other amount as is prescribed by the regulations), and
- b) Loss, including the reasonable costs and expenses that would be incurred in taking all reasonable and practicable measures to prevent, mitigate or make good harm to the environment.

Notification is required even where 'harm to the environment is caused only in the premises where the pollution incident occurs', as specified in 147(2).



#### 4. DETAILS

##### ENVIRONMENTAL PROTECTION LICENCE DETAILS

<b>Name of licensee:</b>	RLX Operating Company Pty Limited (ABN: 90 129 963 935)
<b>EPL number:</b>	20691
<b>Premises name and address:</b>	South Eastern Livestock Exchange 9 Bellevale Rd, Yass NSW 2582
<b>Company or business contact details:</b>	<b>Address:</b> Level 4, Suite 20, 717 Bourke St, Docklands VIC 3008 <b>Phone:</b> 1300 709 919 <b>Email:</b> <a href="mailto:enquiries@rlx.com.au">enquiries@rlx.com.au</a>
<b>Website address:</b>	<a href="http://www.rlx.com.au">www.rlx.com.au</a>
<b>Scheduled activity/activities on EPL:</b>	Livestock intensive activities
<b>Fee-based activity/activities on EPL:</b>	Animal accommodation

#### 5. POLLUTION INCIDENT – PERSON(S) RESPONSIBLE

##### EMERGENCY CONTACTS

<b>PIRMP activation – Primary Contact</b>	<b>Name:</b> Ross Booth <b>Position:</b> A/Business Manager, SELX <b>Business hours contact number:</b> 0428 878 175 <b>After hours contact number:</b> 0428 878 175 <b>Email:</b> <a href="mailto:ross.booth@rlx.com.au">ross.booth@rlx.com.au</a>
<b>Notifying relevant authorities</b>	<b>Name:</b> Steven Fox <b>Position:</b> Environment & Sustainability Manager <b>Business hours contact number:</b> 0460 368 115 <b>After hours contact number:</b> 0460 368 115 <b>Email:</b> <a href="mailto:steven.fox@rlx.com.au">steven.fox@rlx.com.au</a>
<b>Managing response to pollution incidents</b>	<b>Name:</b> Ross Booth <b>Position:</b> A/Business Manager, SELX <b>Business hours contact number:</b> 0428 878 175 <b>After hours contact number:</b> 0428 878 175 <b>Email:</b> <a href="mailto:ross.booth@rlx.com.au">ross.booth@rlx.com.au</a>



## 6. NOTIFICATION OF RELEVANT AUTHORITIES

RELEVANT AUTHORITIES	CONTACT NUMBER(S)
Fire and Rescue NSW / Rural Fire Service	000
EPA NSW	131 555
NSW Health	(02) 9391 9000
SafeWork NSW	131 050
Yass Valley Council	(02) 6226 1477

## 7. NOTIFICATION OF NEIGHBOURS AND THE LOCAL COMMUNITY



### Details of how the neighbours will be informed of the incident, including updates:

In the event of a notifiable incident neighbouring residential properties shown with a **pink** dot will be door knocked or note left in mailbox to communicate the situation.

In the event of a notifiable incident neighbouring businesses outlined in **orange** and **blue** will be door knocked, note left and/or phoned to communicate the situation.

Businesses include:

1. Martin's fertiliser - Ph. (02) 6225 5551
2. Ampol Foodary - Ph (02) 6226 4022
3. Coolabah Tree Cafe - Ph. (02) 6226 4022
4. McDonald's Yass - Ph. (02) 6226 3527
5. KFC Yass - Ph. (02) 6137 1029
6. Hammer time cafe

### LEGEND

- SELX Premises boundary
- Martin's fertiliser
- Service centre
- Residential



## 8. DESCRIPTION OF LIKELIHOOD OF HAZARDS

POTENTIAL HAZARD	LIKELIHOOD
Chemical leak of spill contaminating the environment and / or injury to personnel	Low
Fuel leak or spill contaminating the environment and / or injury to personnel	Low
Fire – Bushfire destroying infrastructure and / or injury to personnel	Low
Fire – Combustible hay destroying infrastructure and / or injury to personnel	Low
Fire – Kitchen fire destroying infrastructure and / or injury to personnel	Low
Fire – Vehicle Fire destroying infrastructure and / or injury to personnel	Low
Gas – uncontrolled release of gas destroying infrastructure and / or injury to personnel	Low
Failure to contain sheep & cattle waste materials	Low
Failure to contain effluent system water	Low
Contamination of the effluent water system	Low

## 9. PRE-EMPTIVE ACTIONS TO BE TAKEN

Specific pre-emptive actions for the corresponding hazards identified in the earlier section:

- a) Provision of a dedicated chemical storage area with bunding and spill containment kits.
- b) Provision of dedicated fuel storage area with bunding and spill containment kits.
- c) The property boundary fence to be kept mown and clear of debris.
- d) Regular monitoring of stored hay / fodder for heat.
- e) Ensure the kitchen has sufficient appropriate fire extinguisher and fire blanket.
- f) Ensure fire extinguishers are located at strategic points within the site.
- g) Smell check for gas leaks
- h) Ensure sheep and cattle waste area is appropriately managed.
- i) Utilisation of barrier and collection systems, swale and fail trains. Regular monitoring of effluent system infrastructure.
- j) Quarterly sampling and testing of piezometers and effluent system water.

In general:

- c) Staff induction prior to or at commencement of employment
- d) Regular staff meetings
- e) Use of Safety Data Sheets (SDS) information
- f) Saleyard advisory meetings
- g) Annual internal environmental compliance audit



## 10. INVENTORY OF POLLUTANTS

POLLUTANT	TYPE	MAXIMUM QUANTITY	LOCATION
Oven / Grill cleaner	cleaner	5 Litres	Kitchen
Sanitiser no rinse	cleaner	5 Litres	Kitchen
Machine dishwashing liquid	cleaner	5 Litres	Kitchen
Rinse aid	cleaner	5 Litres	Kitchen
K6 Lime and scale remover	cleaner	5 Litres	Kitchen
Caustic soda	Chemical	200 Litres	Wastewater system container
Poly aluminium chloride	Chemical	200 Litres	Wastewater system container
Citric acid	Chemical	200 Litres	Wastewater system container
Hypochlorite solution	Chemical	200 Litres	Wastewater system container
Stock paint	cattle paint	10 Litres	Cattle container
Inox Lube Aerosol	Oil/lubricant	4 Litres	Workshop
WD 40	Oil/lubricant	2 Litres	Workshop
workshop Grease	Oil/lubricant	5 Kilograms	Workshop
Truck wash	cleaner	20 Litres	Workshop
Petrol	Flammable liquid	20 Litres	Workshop
Alchlor standard	Miscellaneous	200 Litres	Workshop
Waste Oil	Oil/Flammable Liquid	200 Litres	Workshop





POLLUTANT	TYPE	MAXIMUM QUANTITY	LOCATION
Waste Oil Filters	Oil/Flammable Liquid	70 Litres	Workshop
Diesel Fuel	Combustible Liquid	500 Litres	Workshop
Acetylene gas	Flammable Gas	6.4 cubic metres	Workshop
Superdraulic 68	Oil/lubricant	100 Litres	Workshop
RX Super 15W-40	Oil/lubricant	10 Litres	Workshop
Two stroke semi synthetic	Oil/lubricant	8 Litres	Workshop
SYN-X 7000 5W-30	Oil/lubricant	100 Litres	Workshop
Top Dog XDO SAE 15W-40	Oil/lubricant	100 Litres	Workshop
Coolant	Coolant	14 Litres	Workshop
Full synthetic 5W-30	Oil/lubricant	14 Litres	Workshop
Energy synthetic 10W-30	Oil/lubricant	12 Litres	Workshop
Metasulfuron 600 WG	Chemical	500 grams	Workshop
Panzer 450	Chemical	20 Litres	Workshop
Liberate	Chemical	10 Litres	Workshop
Cutlass 500	Chemical	15 Litres	Workshop
SureFire rodenticide	Poison	8 kilograms	Workshop



## 11. SAFETY EQUIPMENT

Safety equipment provided on the site includes:

- Spill kits
- Fire extinguishers
- Fire blankets
- First aide equipment
- SDS's to be kept in the maintenance and administration office
- Dangerous goods manifest to be kept in the maintenance shed and administration building, where required.
- PPE to be available in the maintenance shed and administration building

## 12. COMMUNICATING WITH NEIGHBOURS AND THE LOCAL COMMUNITY

The nature and type of potential pollutant incidents for this site are limited, however if an environmental incident on site is likely to impact neighbouring businesses or the local community, surrounding neighbours will usually be contacted either by phone, SMS, email, door knocking or through information left at the place of residence by a SELX representative to notify them of a situation.

Communication methods will be used on a case-by-case basis, but in all situations, SELX will attempt to notify those neighbours likely to be directly affected as soon as possible.

Ongoing communications with the neighbouring businesses/residents will be maintained until such time as the incident is rectified.

IMMEDIATE NEIGHBOUR	ADDRESS	CONTACT DETAILS
B & R Abbey	191 Black Range Rd, Yass NSW 2582	N/A
Martin's Fertiliser	42 Bellevalle Rd, Yass NSW 2582	(02) 6226 5551
N/A	1600 Yass Valley Way NSW 2582	N/A

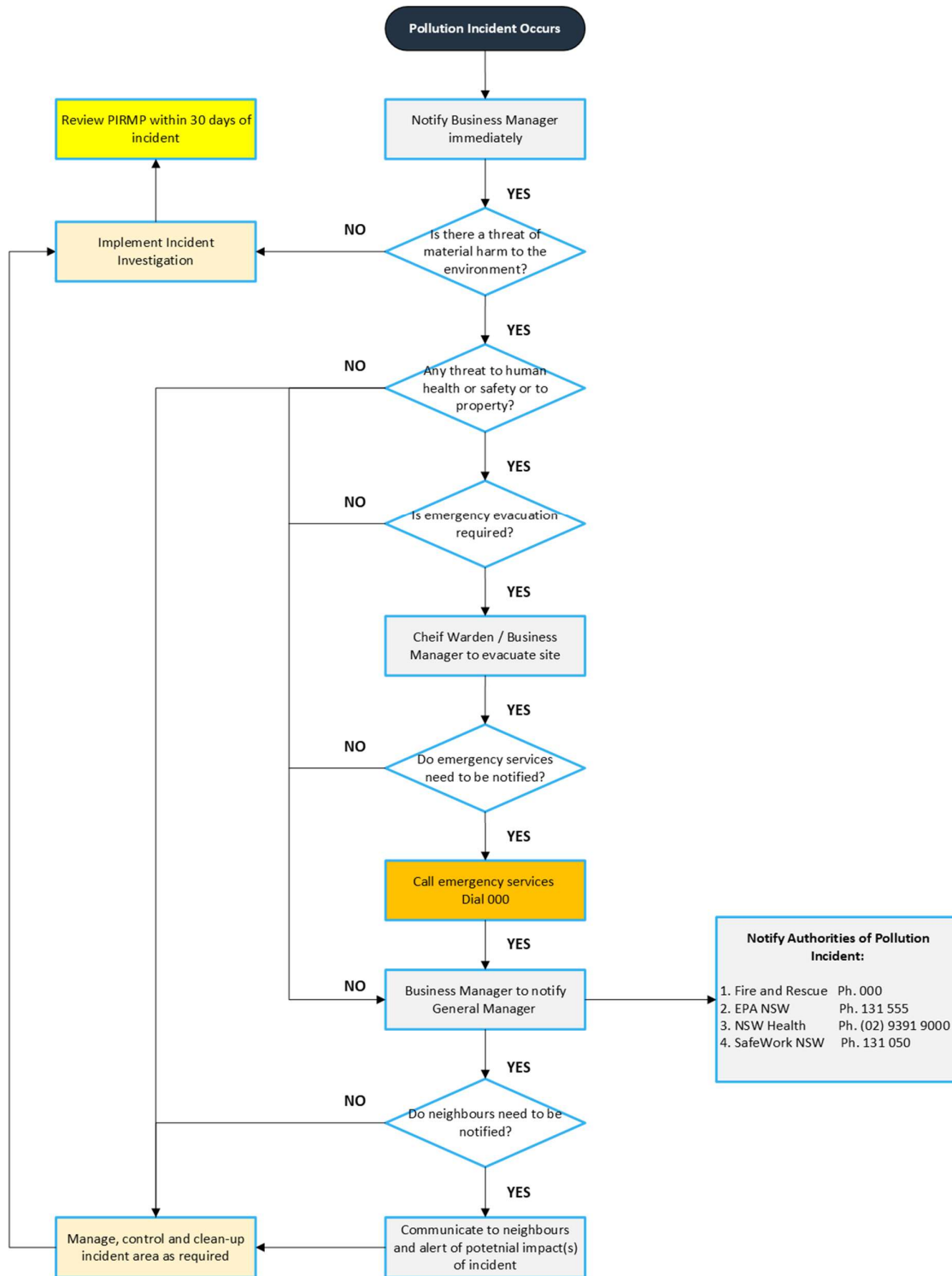
## 13. MINIMISING HARM TO PERSONS ON THE PREMISES

Should a pollution incident occur, it must be immediately reported to the Business Manager (or Assistant Manager in their absence) who will assess the incident and the likely impact on persons on the premises. If appropriate, the Business Manager (or Assistant Manager) shall initiate a site evacuation utilising the public address system.

## 14. MAPS



## 15. ACTIONS TO BE TAKEN DURING OR IMMEDIATELY AFTER A POLLUTION INCIDENT





## **16. COORDINATING WITH PERSONS AND AUTHORITIES**

All staff must notify the Business Manager, immediately after the person becomes aware of a pollution incident. The Business Manager will notify the General Manager in accordance with the RLX Hazard and Incident Reporting Procedure.

If the pollution incident presents a risk of 'material harm to the environment' the General Manager (or delegate) will immediately notify the relevant Authorities after being notified or otherwise becoming aware of the pollution incident.

The following information shall also be provided to the relevant Authorities:

- a) The time, date, nature, duration and location of the incident,
- b) The location of the place where pollution is occurring or is likely to occur,
- c) The nature, the estimated quantity or volume and the concentration of any pollutants involved, if known,
- d) The circumstances in which the incident occurred (including the cause of the incident, if known),
- e) The action taken or proposed to be taken to deal with the incident and any resulting pollution or threatened pollution, if known,
- f) Other information prescribed by the regulations.

## **17. STAFF TRAINING**

All staff affected by the content of this document will receive instruction or explanation on the relevant sections or requirements of the document.





### 18. TESTING AND UPDATING OF THE PIRMP

The PIRMP shall be tested once every 12 months and within one month of any pollution incident occurring. The objective of testing is to assess whether the information included in the PIRMP is accurate, current and is capable of being implemented in a workable and effective manner.

The routing testing will be performed as a desktop exercise and the name of the person(s) carrying out the test will be recorded in the PIRMP test report below. If the PIRMP is updated the date and details on amendments to the plan shall also be recorded.

PIRMP TEST RECORD			
DATE	PERSONNEL INVOLVED	ASPECTS TESTED	TEST FINDINGS

PIRMP DOCUMENT REVIEW RECORD		
REVIEW DATE	DETAILS	AUTHOR
1/12/2017	Initial document review	Kelly Lee (SESL Australia)
5/12/2024	Complete document rewrite including contacts, maps and pollutant inventory	Steven Fox



APPROVER LIST		
NAME	POSITION	APPROVAL / REVIEW DATE
Ross Booth	A/Business Manager	13/12/2024